



HOLLOTEX* EG RUNNER ST

Gating system components for steel casting



Gating system components

A lightweight alternative to clay ceramic gating systems, now also available for steel casting!

HOLLOTEX EG Runner ST

HOLLOTEX EG Runner ST gating systems for hand moulded steel castings are applied wherever a runner system cannot be fixed on the pattern plate.

The HOLLOTEX EG Runner ST system is based on refractory minerals in conjunction with carbon fibres and a binder system. It also features a highly refractory coating where it is in contact with molten steel. This has resulted in running and gating systems which are about 90 % less in weight compared to conventional clay ceramic hollow ware. The product range is based to three main shapes: Tubes, bends and T-pieces. Construction of the metal running system is much easier, quicker and safer than a conventional ceramic and less prone to breakage.

KEY BENEFITS

- + Easy to handle
- + Higher productivity
- + Reduced stockholding
- + Reduced disposal costs
- + Improved working environment



Internal coating on HOLLOTEX
EG Runner ST components

The main advantages

The differences between a conventional clay ceramic system and a HOLLLOTEX system

Reduced weight

Due to the low weight of the components, they are easy and fast to assemble, increasing the productivity of the moulding shop. The physical strain on workers, who now only have to push-fit lightweight gating systems together, is much reduced. Because of its light weight, it is possible to connect a crosslink without hot-melt glue or tapes, just by push-fit. The usage of supporting systems is unnecessary, removing the need to collect the supports after shake-out.

Easy to assemble

Each tube, bend and T-piece has a location flange at one end. With these unique ends, HOLLLOTEX EG Runner ST components are assembled with an easy push-fit connection. Any individual gating system design can be assembled without glue.

Easy to cut

HOLLLOTEX EG Runner ST components are easily cut to shape with a handsaw. Unlike conventional clay ceramic hollow ware, very little dust is generated on cutting. The product is dry cut, removing any need for subsequent drying. With HOLLLOTEX EG Runner ST components, the cut off portions can also be used with adaptors giving a more flexible approach to runner production.

Less stock keeping costs

The product flexibility enables stock keeping to be simplified when using the HOLLLOTEX EG Runner ST components. Because they are easy to shorten, only one standard pipe length is required. Reducing the number of stock-keeping units and inventory.

Reduced contamination and disposal costs

After casting with HOLLLOTEX EG Runner ST components there is minimal contamination of the sand system, and therefore there is no need to remove ceramic fragments during reclamation. Disposal costs for clay ceramic tubes are often very high. With the elimination of hard ceramic fragments in the sand, wear on downstream activities like the shakeout machine, sieves, transport belts and sand coolers are reduced, lowering the costs for service and maintenance of these facilities.



Easy to cut



Easy to assemble



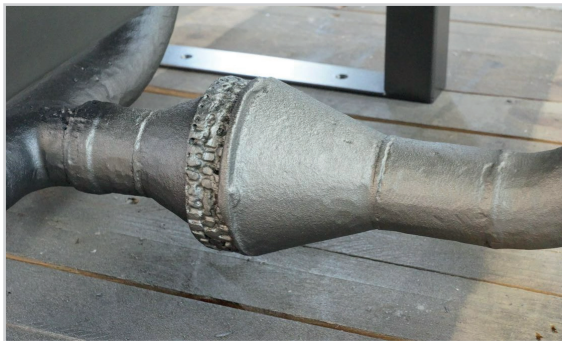
Less contamination and disposal costs

Product application

HOLLOTEX EG Runner ST

Similarly, to HOLLLOTEX EG Runners, which are only suitable for iron casting, HOLLLOTEX EG Runner ST components can be used in combination with HOLLLOTEX C5 units.

This provides a wide range of complementary components such as filter holders.



Filter holder application



HOLLLOTEX EG Runner ST used in combination with HOLLLOTEX C5 components



FOSECO. THINK BEYOND. SHAPE THE FUTURE.

*FOSECO, the Logo and HOLLLOTEX are trade marks of the Vesuvius Group, registered in certain countries, used under licence. All rights reserved. No part of this publication may be reproduced, stored in a retrieval system of any nature or transmitted in any form or by any means, including photocopying and recording, without the written permission of the copyright holder or as expressly permitted by law. Applications for permission shall be made to the publisher at the address mentioned.
Warning: The doing of an unauthorised act in relation to a copyright work may result in both a civil claim for damages and criminal prosecution. All statement, information and data contained herein are published as a guide and although believed to be accurate and reliable (having regard to the manufacturer's practical experience) neither the manufacturer, licensor, seller nor publisher represents nor warrants, expressly or impliedly: (1) their accuracy/reliability, (2) that the use of the product(s) will not infringe third party rights, (3) that no further safety measures are required to meet local legislation. The seller is not authorised to make representations nor contract on behalf of the manufacturer/licensor. All sales by the manufacturer/seller are based on their respective conditions of sale available on request.
© Foseco International Limited 05/23.

Foseco International Limited
Drayton Manor Business Park,
Tamworth, Staffordshire,
England B78 3TL
Phone: +44 (0)1827 262021
Fax: +44 (0)1827 283725
www.foseco.com
Please contact your local Foseco team