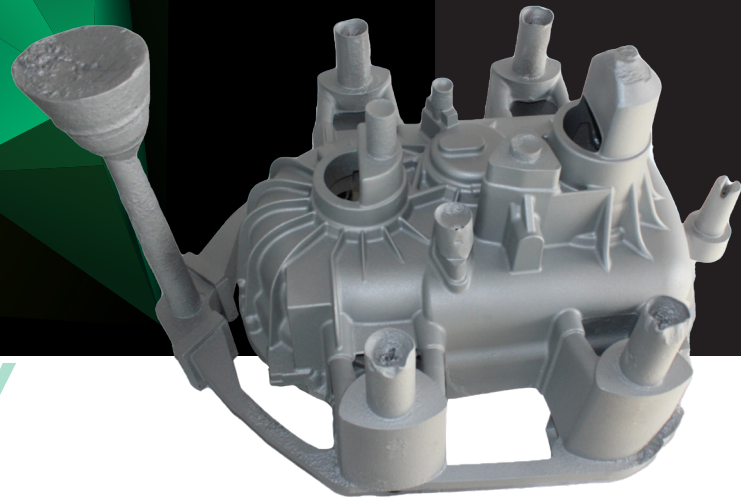


## Sustainable and efficient foundry solutions: The FEEDEX NF1 Advantage



# SUSTAINABILITY

## THE CHALLENGE

As a leading foundry in Italy, Morini was committed to investing time and money in sustainable methods that would help reduce energy consumption and improve worker safety while increasing productivity. They were seeking innovative solutions that could help them achieve these goals and maintain their position as a major player in the European foundry sector.

## FOUNDRY:

Fonderia Morini in Cotignola, Ravenna, Italy is one of the main aluminium foundries in Italy, using automatic sand casting technology and more recently the gravity die casting. Led by the founder's sons, the company invests in sustainable growth and produces high-quality castings.

## PARAMETERS

**Alloy:** AlSi7Mg0.3

**Casting weight:** 22 kg

**Pouring weight old version:** 61 kg

**Pouring weight new version:** 48 kg

**Savings per casting:** 13 kg

**Pouring temperature:** 740 °C

## FOSECO PRODUCTS

### Old version:

5x natural feeders

4x KALMIN S 8/11K feeder sleeves

1x KALMIN S 4/95K feeder sleeve

### New version:

4x FEEDEX NF1 VSN 191 feeder sleeves

2x FEEDEX NF1 VSN 72 feeder sleeves

1x FEEDEX NF1 VSN 118 feeder sleeve

1x FEEDEX NF1 VSN 35 feeder sleeve

1x KALMIN S 4/95 K feeder sleeve

ENERGY  
EFFICIENT



REDUCED  
CO<sub>2</sub>



## OUR SOLUTION

Our FEEDEX NF1 special exothermic feeders helped Morini eliminate the need for exothermic riser powders, reduce energy consumption and improve worker safety while increasing productivity. The FEEDEX NF1 concept delivered high exothermicity with improved feeding performance, very high strength, and easy and quick knock-off of the sleeve and riser stub.

## THE OUTCOME

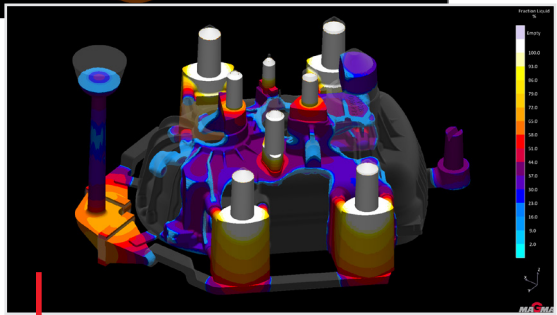
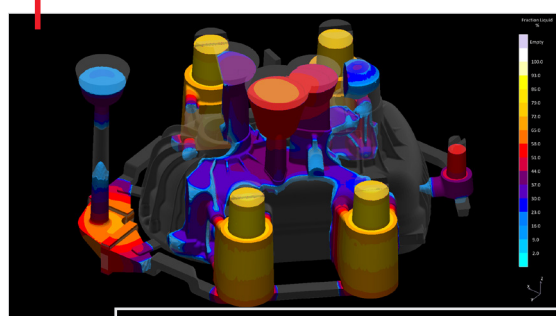
They have found in our FEEDEX NF1 special exothermic feeders, an ideal solution to save energy and time, reducing by almost 30% - 40% the total need of melted metal. It resulted in minimizing fettling costs, reducing process variation and lowering emissions. With the use of our FEEDEX NF1 special exothermic feeders, Morini was able to achieve their sustainability goals and maintain their position as a leader in the foundry industry.

## KEY BENEFITS

- Casting weight reduction
- Number and size of sleeves reduction
- Reduced energy consumption (energy savings)
- Reduced fettling costs
- Less Aluminium remelting
- Higher productivity

> LET'S LEARN MORE 

Before (MAGMA Simulation - Solidification)



After (MAGMA Simulation - Solidification)

THINK BEYOND. SHAPE THE FUTURE.



**VESUVIUS**  
A VESUVIUS GROUP COMPANY

COMMENT: Editorial policy is to highlight the latest Foseco products and technical developments. However, because of their newness, some developments may not be immediately available in your area. Your local sales organisation will be pleased to advise. No part of this publication may be reproduced, stored in a retrieval system of any nature or transmitted in any form or by any means, including photocopying and recording, without the written permission of the copyright holder. © Foseco International Ltd., 2023 \*FOSECO, FEEDEX and KALMIN are trade marks of the Vesuvius Group, registered in certain countries, used under licence.

